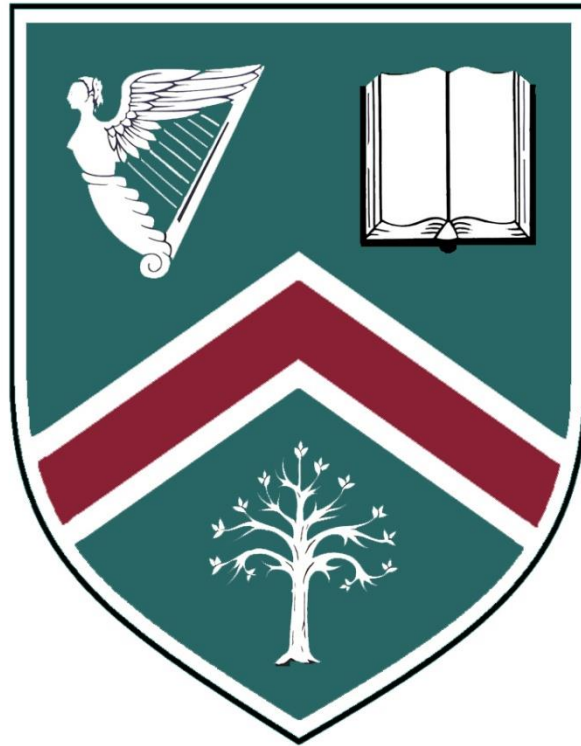


# STRATHEARN SCHOOL UNIFORM REGULATIONS

2020 - 2021



<b>Contents</b>	<b>Page</b>
Introduction to uniform regulations	3
Uniform list: Forms 1 – 3	4
Uniform list: Forms 4 – 5	5
Uniform list: Sixth Form	6
Uniform notes	7
PE uniform	8
Footwear regulations and additional guidance on shoes	9
Guidance on piercings	13
Advice to parents on maintaining the appearance and longevity of skirts	14

## **STRATHEARN SCHOOL UNIFORM REGULATIONS**

Uniform plays a valuable role in contributing to the unique character of a school. It can instil pride and encourage identity with, and support for, our school ethos. Though uniform can seem expensive, it is sensible, practical and, with care, can last for some time. A uniform list with details of suppliers is issued to parents each academic year. For safekeeping it is essential that all items of clothing and equipment are clearly marked with the owner's name.

### **SECONDARY DEPARTMENT UNIFORM LIST 2020-21**

The pupils of Strathearn are expected to wear the correct uniform at all times. This is an important part of our school identity and reflects a respect for both self and school. ***Once guidelines are issued with regards the commencement of the new school year, we will be in contact to outline uniform regulations.***

#### ***Official Stockists of School Uniform***

<b>Gowdys</b>	<b>Warnocks Ltd</b>	<b>Alan Espey</b>	<b>School Days</b>	<b>Podium4Sport</b>	<b>Roberts of Bangor</b>
121 - 131 Woodstock Road Belfast Tel: 028 9045 9052	791-793 Lisburn Rd Belfast Tel: 028 9038 1828	33 High Street Newtownards Tel: 028 9181 4789	432-434 Newtownards Road Belfast Tel: 028 9543 3725 & 2 High St Newtownards Tel: 028 9182 7717	40 Montgomery Road Belfast Tel: 028 9070 1444	24 Central Ave Bangor Tel:028 91270516

***We would encourage parents/guardians to contact uniform suppliers directly with regards the purchase of school uniform. Each supplier will have their own procedures in place to conform with current health guidelines and some are putting appointment systems in place.***

#### ***Compulsory items for all year groups:***

- **Blazer** - to be worn every day to and from and around school; may be removed in classroom/ study/ common room/ canteen
- **Black tights** as standard winter uniform (40 denier or more)
- **Shoes** – plain black leather / leather look, laced, with strap or slip-on shoes
  - **Forms 1 – 3:** flat heeled / continuous sole
  - **Forms 4 – 6:** flat / low heels. Heels must be no more than 5 cm (2”) in height, measured on the outside of the heel, and must be block / cone heels.  
(See Footwear Regulations on pages 9 - 12 for additional information and examples)
- **House Tee Shirt and House Badge**

#### ***Optional:***

- **Regulation green cardigan or v-necked pullover**
- **Regulation school scarf**
- **Approved coats:**
  - Target Dry green waterproof, breathable, light weight parka from official stockists (comes with own bag) (only available from Espeys and Warnocks);
  - Green fleece-lined waterproof coat, if already purchased;
  - Kukri rain jacket (see PE Uniform, page 8)

**Coats must be bought large enough to be worn over blazers in cold or wet weather.**

**PLEASE NOTE THAT PUPILS WILL BE ASKED TO REPLACE ANY ITEM OF UNIFORM WHICH DOES NOT CONFORM TO SCHOOL REGULATIONS.**

## FORMS 1 – 3 UNIFORM

### WINTER UNIFORM

- **Blazer**
- **A-line green skirt** (*knee length – see below for additional guidance on skirt length*)
- **Beige long-sleeved blouse** buttoned at neck
- **Regulation tie**
- **Black tights** (40 denier or more)
- **Black leather / leather look shoes of the approved type**  
(see Footwear Regulations)

### SUMMER UNIFORM (Summer term and September\*)

- **Blazer**
- **A-line green skirt** (as above)
- **Turquoise open-necked, short-sleeved blouse**
- **Beige, knee-length socks**
- **Black leather / leather look shoes of the approved type** (as above)

### HOUSE UNIFORM (all year)

- **House tee-shirt and house badge** (available only from Podium4Sport)

#### Optional:

- **Regulation green cardigan or v-necked pullover**
- **Regulation school scarf**
- **Approved coats:**
  - Target Dry green waterproof, breathable, light weight parka from official stockists (comes with own bag);
  - Green fleece-lined waterproof coat, if already purchased;
  - Kukri rain jacket (see PE uniform, page 8, available only from Podium4Sport)

**Coats must be bought large enough to be worn over blazers in cold or wet weather.**

**\*Form 1 pupils do not need Summer uniform until the Summer term of next year.**

#### Guidance on skirt length:

**'Knee length' means when the skirt is worn buttoned at the waist and the girl is kneeling and upright (not bending forward), the skirt must touch the ground around her.**

**Most girls should be buying at least a 22" length skirt, or longer if over 5ft 4"/162 cm. Only girls who are less than 5ft / 152cms tall should be considering purchasing a 20" long skirt or less.**

[Many girls grow a few inches / cms over the course of the year. This should be taken into consideration when purchasing a skirt so that it can last the whole year.]

## FORMS 4 - 5 UNIFORM

### WINTER UNIFORM

- **Blazer**
- **All round green box pleated skirt** (*below the knee - see below for additional guidance on skirt length*)
- **Beige long-sleeved blouse**, buttoned at neck
- **Regulation tie**
- **Black tights** (40 denier or more)
- **Black leather / leather look shoes of the approved type**  
(see Footwear Regulations)

### SUMMER UNIFORM (Summer term and September)

- **Blazer**
- **All round green box pleated skirt** (as above)
- **Turquoise open-necked, short-sleeved blouse**
- **Black tights** (40 denier or more)
- **Black leather / leather look shoes of the approved type** (as above)

### HOUSE UNIFORM (all year)

- **House tee-shirt and house badge** (available only from Podium4Sport)

### Optional:

- **Regulation green cardigan or v-necked pullover**
- **Regulation school scarf**
- **Approved coats:**
  - Target Dry green waterproof, breathable, light weight parka from official stockists (comes with own bag)(available only from Espeys and Warnocks);
  - Green fleece-lined waterproof coat, if already purchased;
  - Kukri rain jacket (see PE uniform, page 8, available only from Podium4Sport)

**Coats must be bought large enough to be worn over blazers in cold or wet weather.**

### Guidance on skirt length:

**'Below the knee' means when buttoned at the waist the skirt must cover the knee completely. The knee must not be visible when standing.**

**Most girls will require a 24" / 26" length skirt, in whatever women's size they purchase. Skirts longer than this may have to be made to order.**

**Only girls who are less than 5ft 3" / 160 cms tall should be considering purchasing a 22" long skirt.**

[Many girls grow a few inches / cms over the course of the year. This should be taken into consideration when purchasing a skirt so that it can last the whole year.]

## **SIXTH FORM UNIFORM:**

### **WINTER UNIFORM**

- **Blazer**
- **All round green box pleated skirt** (*below the knee – see below for additional guidance on skirt length*)
- **White long-sleeved blouse**, buttoned at neck.
- **Sixth Form tie**
- **Black tights** (40 or more denier)
- **Black leather / leather look shoes of the approved type**  
(see Footwear Regulations)

### **SUMMER UNIFORM** (Summer term and September)

- **Blazer**
- **All round green box pleated skirt** (as above)
- **White open-necked, short-sleeved blouse**
- **Black tights** (40 or more denier)
- **Black leather / leather look shoes of the approved type** (as above)

### **HOUSE UNIFORM** (all year)

- **House tee-shirt and house badge** (available only from Podium4Sport)

### **Optional:**

- **Regulation green cardigan or v-necked pullover**
- **Sixth form scarf**
- **Approved coats:**
  - Target Dry green waterproof, breathable, light weight parka from official stockists (comes with own bag)(available only from Espeys and Warnocks);
  - Green fleece-lined waterproof coat, if already purchased;
  - Kukri rain jacket (see PE uniform, page 8, available only from Podium4Sport)

**Coats must be bought large enough to be worn over blazers in cold or wet weather.**

### **Guidance on skirt length:**

**'Below the knee' means when buttoned at the waist the skirt must cover the knee completely. The knee must not be visible when standing.**

**Most girls will require a 24" / 26" length skirt, in whatever women's size they purchase. Skirts longer than this may have to be made to order.**

**Only girls who are less than 5ft 3" / 160 cms tall should be considering purchasing a 22" long skirt.**

## **UNIFORM NOTES**

Uniform should be worn in the appropriate manner, with blouse top buttons done up, blouses tucked into waistbands and ties properly knotted. Scarves or outdoor coats should not be worn indoors. Make-up, coloured nail polish, unnatural hair colours / colour combinations and extreme hairstyles are not permitted. Hair accessories, if worn, should be discrete and of a plain nature.

**1. Labelling:** All property brought to school, including items of uniform, must be clearly marked with the owner's name.

### **Pupils are responsible for the safekeeping of their own property.**

**2. Travelling:** Correct school uniform must be worn to and from school. Approved school coats and scarves only are permitted with blazers.

**3. Skirts:** for advice on care of skirts, see page 14.

**4. Jewellery:** One simple ring is permitted, as is a pair of small, stud type earrings worn in the **ear lobes\***. Other items of jewellery should not be brought to school. School or approved charity badges only may be worn.

**\* Nose, eyebrow, tongue, lip piercings or additional earrings are totally unacceptable with school uniform.** (See Uniform Guidance on Piercings, page 13, for further details and examples.) **Pupils will be asked to have them removed if they do not meet regulations.**

**5. Sports Uniform:** Sports gear should be worn only during **PE or other school sporting activities**. Special permission must be obtained to wear it at any other time.

**[Exception:** Girls who have PE last period may go home in regulation tracksuit bottoms and hooded sweat shirts. If they do not have these items of PE kit they must go home in normal school uniform.]

**On all other occasions, hoodies are not considered to be part of normal regulation school uniform and must not be worn to, from, or during school. This includes those manufactured specifically for a particular school group / event.**

**The School will be sensitive to the needs of different cultures, gender orientation, races and religions and work to accommodate these needs within its uniform policy.**



**PE Uniform, House tee shirt and badge, Kukri rain jacket**

**FORMS 1 - 4**

(And as replacement for existing PE uniform for older pupils)

**Required from September:**

- Skort
- Polo Shirt
- Hooded Sweat Shirt
- Tracksuit Bottoms
- Shorts
- Socks (knee length)
- White Ankle Socks

***Optional***

- Rain jacket

**PE Uniform for:**

<b>Hockey</b>	Polo shirt, skort, socks, trainers, tracksuit bottoms, hooded sweat shirt, hockey stick, gum shield, shin guards
<b>Netball</b>	Polo shirt, skort, socks, trainers, tracksuit bottoms, hooded sweat shirt
<b>Gymnastics</b>	Polo shirt, shorts, socks, trainers
<b>Dance</b>	Polo shirt, skort, socks, trainers
<b>Tennis</b>	Polo shirt and skort, socks, trainers, tennis racket
<b>Athletics</b>	Polo shirt, shorts, socks, trainers

**Sports Equipment**

- 1 pair of trainers for indoors
- 1 pair of trainers for outdoors
- Hockey stick
- Sports bag (no regulations as to colour or shape)
- Gum shield and shin guards
- Towel for swimming
- Swimsuit & Cap

***N.B.***

The Physical Education staff will be pleased to give advice to parents about the purchase of Sports Equipment.

**Summer Term - *not required until March***

- Tennis racket

**PE Policy:** Pupils must bring a parental note if they wish to be excused from PE. Non-participants will be expected to wear trainers, tracksuit bottoms and hooded sweatshirt.



## **FOOTWEAR REGULATIONS**

We would like to draw the attention of parents/guardians to the importance of buying regulation footwear for pupils

**Parents of pupils whose shoes do not conform to school regulations will be asked to purchase new shoes immediately.**

**School shoes must be plain black leather / leather look, laced, with strap or slip-on shoes.**

- **Forms 1 – 3:** flat-heeled / continuous sole
- **Forms 4 – 6:** flat / low heels. Heels must be no more than 5 cm (2") in height, measured on the outside of the heel, and must be block / cone heels.

(See Guidance on pages 10-12 for additional information and examples).

**Trainers must not be worn except for PE / Sports.**

**Please note: the following do not conform to school regulations and must not be purchased to be worn with school uniform:**

- platform shoes;
- suede or patent leather shoes;
- canvas or other textile shoes;
- shoes with stiletto, kitten or narrow wedge heels;
- shoes with decorative additions such as bows, metal studs or eyelets, large buckles, chains, patent or suede trims or coloured sections;
- trainers

In recent years, **ballet pumps** have been popular. These shoes tend to slip off and may be unsafe. **We would therefore advise against purchasing this type of shoe.**

**Guidance on styles of shoes**

**FORMS 1 – 3**

These are examples of shoe styles that are acceptable. Other similar styles are also permissible.



## Guidance on styles of shoes

### FORMS 4 – U6

These are examples of shoe styles that are acceptable (in addition to those shown on page 10)



**Heels must be no more than 5 cm (2") in height, measured on the outside of the heel. Any shoes with heels must be of a 'block or cone style' with at least a 3.5 cm (1½") base.**

Guidance on styles of shoes

These are examples of shoe styles that are NOT acceptable



No  
Stilettos

No patent trim or studs



No large buckles  
/patent

Too high



No canvas

No bows



Ballet pumps not  
advisable, too flimsy and  
lacking in support



No eyelets or bows



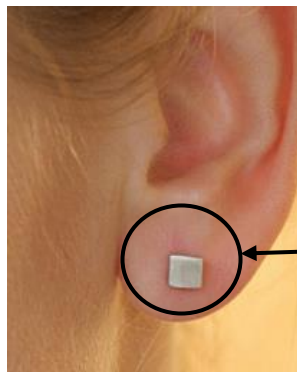
No patent

## GUIDANCE ON PIERCINGS:

Girls may wear one simple, small stud in each ear lobe only. Hooped earrings are not permitted.

Other piercings are not permitted. These include

- nose studs
- nose rings
- eyebrow piercings
- lip studs
- tongue piercings.



Earlobe refers to lower part of ear as indicated. Piercings are not permitted in any other part of the ear.



Nose piercings are not permitted.

### Advice to pupils and parents:

*Pupils should think carefully before having piercings carried out anywhere but in the ear lobe. Plasters to conceal piercings and visible piercing retainers are not permitted.*

**Pupils will be asked to have any piercings that do not meet regulations removed.**

## **ADVICE FOR PARENTS ON MAINTAINING THE APPEARANCE AND LONGEVITY OF SKIRTS**

**Keep washing to a minimum as skirts will fade with repeated laundering**

**When laundering skirts, particularly pleated ones:**

- **Always wash the skirt inside out.** This will help to reduce any pills or bobbles that may form, as loose fibres come to the surface during washing.
- **Always wash the skirt separately or with similar coloured garments.**
- **Always use a cool wash (max 40°C) and a non-biological detergent, at reduced spin speed.**
- **Roll and fold pleated skirts before placing inside a net laundry bag / pair of tights.** This will help to maintain pleats.
- **Dry flat / line hang.**

**DO NOT:**

- **Use fabric conditioner** (pleats fall out with conditioner)
- **Tumble dry** (subjecting garments to high temperatures will cause the garment to shrink, lose shape, eliminate pleats and the appearance of the skirt will deteriorate)

**Please always check the care label on your garment.**

All stockists have been notified about the need for clear care instructions on skirts.