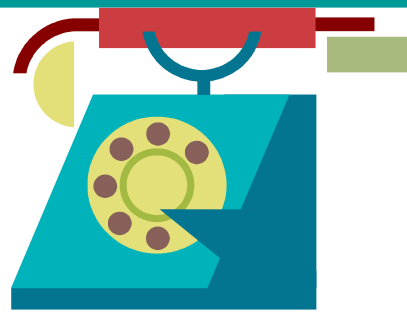


**It's good to talk!**

*If you feel you need to talk to someone other than a parent or teacher, the following telephone numbers and websites may be useful:*



### **For Parents**

NI Parents' Advice Centre:  
Phone: (028) 9023 8800  
Helpline: 0808 8010 772

### **Websites:**

[www.parentsadvicecentre.org.uk](http://www.parentsadvicecentre.org.uk)  
[www.childnet.com](http://www.childnet.com)  
[www.thinkuknow.co.uk](http://www.thinkuknow.co.uk)

### **For Pupils**

Childline: 0800 1111  
Lifeline: 080 8808 8000

### **Websites:**

[www.childline.org.uk](http://www.childline.org.uk)  
[www.antibullying.net](http://www.antibullying.net)  
[www.bullying.co.uk](http://www.bullying.co.uk)  
[www.thinkuknow.co.uk](http://www.thinkuknow.co.uk)  
[www.endbullying.org.uk](http://www.endbullying.org.uk)



Strathearn School



# Anti-bullying Policy



A copy of our Anti-bullying Policy is available at  
[www.strathearn.org.uk](http://www.strathearn.org.uk)  
(under Parental Information - School Policies)  
and in the School Reception for your consultation.

## THE GIRLS OF STRATHEARN AGREE THAT

**Bullying is not acceptable!**

The Anti-Bullying Policy helps us to:

- ◇ identify bullying behaviour
- ◇ have clearly defined strategies for dealing with bullying incidents

### Bullying has 3 key elements :

- ◇ Is repeated behaviour that happens over a period of time
- ◇ It involves an imbalance of power
- ◇ It is intentionally hurtful behaviour

**Bullying can include:**

#### **PHYSICAL**

- ◇ kicking, punching, pushing, hair-pulling, hitting, tripping up
- ◇ flicking, poking, spitting
- ◇ messing about with, hiding or taking other people's belongings
- ◇ threatening with older brothers/sisters/friend

#### **EMOTIONAL**

- ◇ name-calling, sarcasm
- ◇ isolating an individual (agreeing not to speak to her/excluding her from groups)
- ◇ unkind looks, teasing, mocking
- ◇ stirring - encouraging others to fight
- ◇ spreading hurtful and untruthful rumours
- ◇ making offensive remarks including those of a sexual, homophobic, racial, sectarian or religious nature

These actions can take place face-to-face, in written form, via third parties or via electronic means.

#### **ELECTRONIC/CYBERBULLYING**

Is bullying behaviour that is displayed through mobile/smart phones or the internet. It includes:

- ◇ hurtful, embarrassing or threatening material posted online (eg on social networking websites)
- ◇ nasty messages sent as texts, emails or other websites or apps
- ◇ being excluded from an online game
- ◇ fake profiles on a social network to make fun of others



When this bullying behaviour occurs the staff will invoke the Anti-Bullying Policy.

### Our Anti-Bullying Policy sets out 3 steps for dealing with reported incidents of bullying:

**Step 1:** Investigating the report

**Step 2:** Taking action

**Step 3:** Monitoring and reviewing the situation

*What should you do if you are being bullied or know anyone who is being bullied?*

### **TELL SOMEONE!**

In school any bullying behaviour may be reported to any of the following:

- ◇ a member of staff
- ◇ a Peer Mentor
- ◇ a Form Tutor
- ◇ the Head of Key Stage/Year Head
- ◇ the Vice Principal (Pastoral)
- ◇ the School Counsellor
- ◇ anonymously via our 'Report Bullying' boxes

**SHOW PUPILS WHO ENGAGE IN BULLYING BEHAVIOUR THAT YOU DON'T LIKE WHAT THEY ARE DOING. HELP AND SUPPORT PUPILS YOU SEE WHO ARE BEING BULLIED.**

In Strathearn, we take every report of bullying seriously. Bullying is a breach of our Positive Behaviour Policy and will not be tolerated. Sanctions vary according to the type and severity of bullying behaviour.

**IT IS  
EVERYONE'S  
RESPONSIBILITY  
TO PREVENT  
BULLYING!**

Bullying is not acceptable and will not be tolerated

